

# Lincolnshire Wolds Area of Outstanding Natural Beauty



2004  
Annual Review  
2005

# Foreword

Welcome to the Annual Review of the Lincolnshire Wolds Area of Outstanding Natural Beauty (AONB). It has been an exceptionally busy period for the Lincolnshire Wolds Countryside Service (LWCS) under the guidance of the Lincolnshire Wolds Joint Advisory Committee (JAC).

2004/05 has seen the launch of the new Lincolnshire Wolds Management Plan. The production of this document was the culmination of an extensive period of public and partnership consultation to help formulate a vision for the Wolds, establish policies and objectives and most importantly determine a programme of action. Attendance at numerous shows, a questionnaire survey and series of public events under the banner 'Celebrating the Past, Planning for the Future' have been instrumental in establishing consensus on what we value most about our AONB and how we can work to protect and enhance it for future generations. Work on the Management Plan has been very time consuming but has undoubtedly helped to raise the profile of the AONB amongst both residents and visitors to the area.

The LWCS has benefited from firm funding commitments from the Countryside Agency and local authority partners enabling the development of a core team of four staff to help protect and enhance the AONB. One of the main success stories of the year has been the successful establishment of a new pilot Sustainable Development Fund through a £105,000 grant provided by the East Midlands Development Agency. External funding has provided the opportunity of creating a further part-time Project Officer post to help oversee the Fund. This has been the first of its kind for an English AONB and has generated considerable interest at local, regional and national levels.

I hope you will enjoy reading this annual report which provides a summary of the Lincolnshire Wolds AONB partnership activity from April 2004 - March 2005. I would finally like to thank all the many individuals and organisations that have contributed to a very successful year for the AONB. We look forward to building on these successes over the months ahead which will be an undoubtedly busy time as we continue to work together to help deliver the Management Plan.

*Councillor Bernard Theobald  
Chairman  
Lincolnshire Wolds Joint Advisory Committee.*



# Areas of Outstanding Natural Beauty



## What are the obligations for managing AONBs?

In 1991 the Countryside Commission published a policy statement about AONBs which sets out the following obligations for their management:

- The primary purpose of AONB designation is to conserve and enhance natural beauty.
- In pursuing the primary purpose account should be taken of the needs of agriculture, forestry, other rural industries and of economic and social needs of local communities. Particular regard should be made to promoting sustainable forms of social and economic development that in themselves conserve and enhance the environment.
- Recreation is not an objective of designation, but the demand for recreation should be met so far as this is consistent with the conservation of natural beauty and the needs of agriculture, forestry and other uses.

The Countryside and Rights of Way Act 2000 (CRoW Act) introduced significant measures to improve the protection and management of AONBs, including placing a statutory duty on local authorities to produce, and regularly review, a management plan for the AONB.

## What is an AONB?

The National Parks and Access to the Countryside Act 1949 (NPAC Act) established powers to create AONBs, with the overriding objective of conserving and enhancing their natural beauty. 'Natural beauty' is not just the look of the landscape, but includes landform and geology, plants and animals, landscape features and the rich history of human settlement over the centuries. Whilst the original reasons for protection still hold true today, with the landscape quality of overriding importance, there has been increasing realisation of the need to address wider social and economic issues. This will ensure the designation has a relevance to those communities dependent upon these areas for living and working purposes.



AONBs are one of a group of globally protected landscapes. They fall within a worldwide category of Protected Landscapes, established by the International Union for Conservation of Nature and Natural Resources (IUCN) where they are classed as 'Category V Protected Landscapes'. The National Association for AONBs (NAAONB) is a national independent organisation acting on behalf of the AONB family. Its membership is primarily local authorities that have AONBs and are concerned to improve their management. The Lincolnshire Wolds AONB partnership works closely with the NAAONB to ensure that our local interests are represented at a national level.



## Facts & Figures

The Lincolnshire Wolds was designated an AONB in 1973 and is one of 41 AONBs in England and Wales.



<b>Size:</b>	558 km <sup>2</sup> (216 miles <sup>2</sup> )
<b>Area by Land Use</b>	82% farmland (13% in permanent pasture), 4% woodland, other 14%
<b>Number of Parishes</b>	74 parishes; 97 villages
<b>Population</b>	12,915 (LWCS estimate from 1995 statistics)
<b>Settlement</b>	Numerous attractive farmsteads, country houses, hamlets and nucleated villages that contribute to the Wolds special character.  Market towns located at the periphery of the AONB - Alford, Caistor, Horncastle, Louth, Market Rasen and Spilsby.
<b>Landscape Character</b>	North west scarp Chalk wolds Ridges & valleys of the south-west South east claylands
<b>Special Sites</b>	97 Scheduled Monuments (SMs) 15 Sites of Special Scientific Interest (SSSIs) 21 Regionally Important Geological and Geomorphological Sites (RIGS) 200 Sites of Nature Conservation Importance (SNCIs) 15 Protected Roadside Verges
<b>Rights of Way</b>	Footpaths - 217,112 metres  Bridleways - 149,803 metres  Roads Used as Public Paths - 1,833 metres  Byways Open to All Traffic - 2,465 metres  Long distance walk route - the Viking Way (Humber - Rutland)  National Cycling Route (Hull - Harwich)
<b>Planning Authorities</b>	
<b>East Midlands Region</b>	Lincolnshire County Council: 516.5 km <sup>2</sup> East Lindsey District Council: 397 km <sup>2</sup> West Lindsey District Council: 119.5 km <sup>2</sup>
<b>Yorkshire and Humberside Region</b>	North East Lincolnshire Council: 41.5 km <sup>2</sup>

## Outstanding Qualities

The Landscape Character Assessment highlights the following outstanding qualities:

**A unique physiography (geology and topography)** - The Wolds is the highest upland landscape in eastern England between Yorkshire and Kent and has a complex geomorphology; nowhere else in Britain has a chalk landscape been so extensively modified by glaciations. These have given rise to some of its most striking features including numerous steep-sided and open-ended combes.

**A scenic, working landscape** - Unlike most other AONBs, the high scenic quality of the Wolds depends almost entirely upon the area's use for agriculture. Much of its charm is derived from the seasonally changing field and cropping patterns; the rural scenes of farming activity; and the traditional villages and farmsteads in brick and pantile.

**A major archaeological resource** - The Wolds has a rich legacy of prehistoric sites and a wealth of historic landscape features. Most of Lincolnshire's long barrows are in the Wolds, with a high concentration of round barrows, together with many important ancient trackways including the ridge top routes of the Bluestone Heath Road and the Caistor High Street. The Wolds also has one of the largest densities of deserted medieval villages in the country.

**A valued cultural landscape** - The Wolds landscape has been a source of cultural inspiration. The Tennyson family has a strong association with the area. Alfred, Lord Tennyson - the Poet Laureate - spent much of his formative years in the Wolds and it is featured in many of his works including 'The Brook'. The landscape has offered inspiration to many artists and writers over the years including the mid-19<sup>th</sup> century landscape painter Peter de Wint and more recently the author A. S. Byatt in the Booker prize-winning novel 'Possession'.





## Partnerships

### Local Partnerships

The Lincolnshire Wolds Countryside Service (LWCS), hosted by Lincolnshire County Council, currently implements a varied work programme on behalf of the JAC and its core funders. The LWCS works alongside a wide range of organisations, local landowners, community groups and volunteers advising on policy and undertaking activity that furthers the interests of the AONB and wider Wolds Character Area.

The care of the AONB has been entrusted to the local authorities, organisations, community groups and those who live and work in the area. Much of the area is in private ownership, with few publicly owned and managed sites. Private landowners, particularly farmers, have a crucial role to play in continuing to safeguard this unique landscape.

The Lincolnshire Partnership, Tastes of Lincolnshire and Visit Lincolnshire initiatives and Local Strategic Partnerships (LSP) are providing exciting new opportunities for partnership working in addition to current partnerships including:

- County Lottery Officers Group
- Coversands project
- East Lindsey LSP - Community and Regeneration Theme Group
- Interconnect Walking project
- Lincolnshire Association for People with Disabilities
- Lincolnshire Biodiversity Action Plan (BAP) Partnership - Steering Group
- Lincolnshire BAP Partnership - Farmland & Grassland Group
- Lincolnshire County Council Cycling Group
- Lincolnshire RIGS Group
- Lincolnshire Tourism meetings, including Tourism Action Group (TAG) meetings
- Lincolnshire Wolds Walking Festival
- Market Towns Initiative
- North East Lincolnshire LSP - Sustainable Development Forum
- West Lindsey LSP

### Regional Partnerships

The Lincolnshire Wolds is increasingly being recognised as an important regional asset. The 'Protected Landscapes in the East Midlands: Joint Statement of Intent' has helped to raise the profile of the Lincolnshire Wolds both regionally and nationally and served to highlight the socio-economic needs of the area. As a result the East Midlands Development Agency has worked with the Lincolnshire Wolds partnership to establish a pilot Sustainable Development Fund (SDF) to support innovative local business and community projects in the AONB. The LWCS are increasingly being invited to comment on various regional initiatives to ensure that the needs of the Lincolnshire Wolds AONB are met including:



- East Midlands Tourism Strategy
- EMRA Sustainable Development Workshop
- Rural Action Conference - EMRAF
- The East Midlands Spatial Strategy
- The East Midlands Sustainability Appraisal

## National Partnerships

The LWCS team have regularly participated in a number of events organised through the National Association for AONBs (NAAONB) to share skills and training opportunities with our colleagues from other AONBs.

There has been considerable national interest in our pilot SDF and we have shared much of our experience with other AONB units. This included a workshop at the 6<sup>th</sup> NAAONB Conference in Llandudno, North Wales in July 2004, and important contributions at AONB funding seminars in London and Leeds. The SDF scheme has also provided us with the opportunity to meet and share expertise through the National Park SDF network. This has helped to foster a spirit of collaboration between AONBs and our sister family of nationally protected landscapes.

We are also actively involved in the work of the national communications group chaired by the NAAONB where we have assisted in the production of the national leaflet 'Explore your Natural Beauty'. We welcome our active links with the NAAONB who continue to campaign on a role of national issues to ensure AONB interests are met on matters including agricultural changes through CAP reform, overhead power-lines and the development of a Joint Accord with English Heritage.



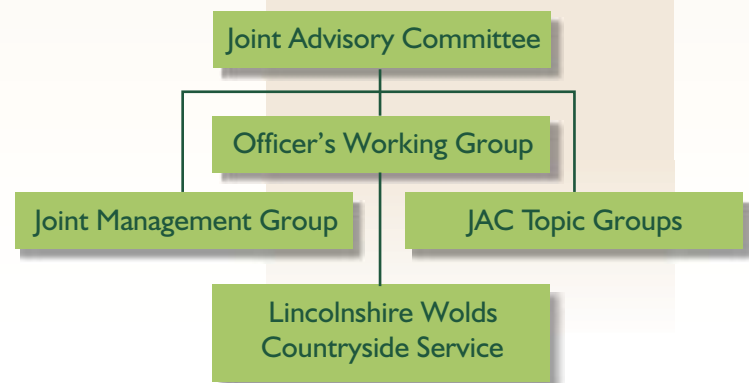
The NAAONB 'Outstanding' magazine reported on a number of Lincolnshire Wolds initiatives including our pilot SDF and our work on refurbishing traditional roadsigns.

National involvement includes:

- Association for Environment Conscious Buildings Conference
- Europarks Funding Fair
- National Parks Sustainable Development Fund Officers Working Group
- Outdoor Show, Birmingham NEC

## Working in Partnership

The Wolds has an established Joint Advisory Committee (JAC): a partnership of public, private and voluntary organisations and representatives who have a special interest or working knowledge of the area. The JAC acts as a forum to advise and guide activity on a wide range of issues across the Wolds and is instrumental in developing, implementing and monitoring the AONB Management Plan 2004 - 09.





# Management Planning

Launch of Management Plan - March 2004

An extensive round of consultations culminated in the production and launch of the Lincolnshire Wolds AONB Management Plan (2004 - 09), a statutory document now adopted by the relevant planning authorities and endorsed by the Lincolnshire Wolds JAC. The Plan sets out an ambitious set of actions for the next five years and it is important that we can achieve real action and positive outcomes on the ground. This requires help from everyone, not least the local communities and landowners, community organisations, planning authorities and public agencies.

The LWCS will help to co-ordinate both the delivery and review of the Plan and will play a key role in identifying and pursuing funding opportunities that can aid its implementation. The success of the Plan will ultimately depend on integrated action involving all organisations, landowners and communities with an influence and/or interest in the management of the AONB.

## The Vision

The starting point for establishing the future direction for managing the AONB has been the development of a collective vision for the Wolds. The public consultations were invaluable in highlighting what people felt was special about the area and how they would like to see it in the future. This helped to formulate our shared aspirations for the Lincolnshire Wolds AONB over the next twenty-five years which are expressed in the following vision statement:

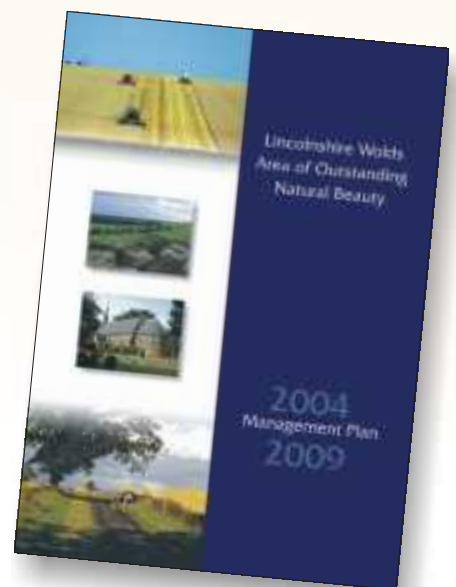
*“The Lincolnshire Wolds will continue to be a vibrant living and working landscape through the primary influence of sustainable agriculture, forestry and land management. It will retain its unique and nationally important sense of place: an area of open rolling hills, dramatic views, farmed fields changing with the seasons, tranquil valleys, woodland, pasture, streams and attractive villages.*

*The Wolds natural and cultural heritage will be well known, enjoyed and widely respected by both residents and visitors. It will continue to provide a place of tranquillity and inspiration for those fortunate enough to visit the area, whilst meeting the economic, social and environmental needs of those who live and work there”.*

The Management Plan sets out a framework of policies, objectives and actions that collectively strive towards achieving this vision.

## Executive Summary

An Executive Summary of the Management Plan was also published following the launch of the full Plan. 10,000 copies were printed and the document provides an overview of the main topic areas covered within the Plan. The Executive Summary has been invaluable in terms of reaching out to a wider audience, raising the profile of the special qualities of the AONB and generating further interest in the work of the partnership.

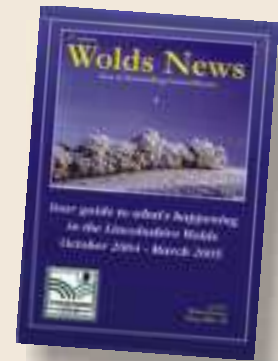


# Raising Awareness and Understanding



## Wolds News

10th and 11th editions of 'Wolds News', the AONB partnership newsletter, were produced and provided an opportunity to highlight the production of the Management Plan. A summer print run of 20,000 and winter print run of 14,000 copies helped to publicise partnership topics, demonstrating the wide interests in the AONB including the Heritage Open Days, the work of the Conservation Grazing Network and other national news including the new Countryside Code.



## Guided Walks, Events and Shows

Over 750 people attended our regular programme of walks and events. These included over 18 walks across the Wolds including the very popular 'Carr's the Star', 'All's Well', and 'Swaby Saunters'. On request the LWCS undertook six talks to various groups with an interest in the Wolds.



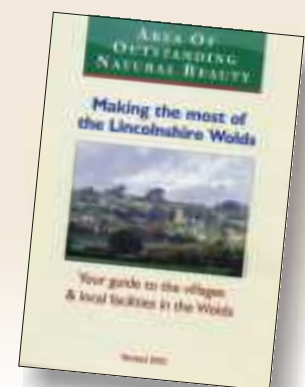
The LWCS maintained a high public profile by attending and staffing a number of displays at public shows and events including:

- Lincolnshire County Show
- Brocklesby Show
- Revesby Country Fair
- Louth Show
- North East Lincolnshire One World Fair
- East Lindsey Environmental Days
- Welton le Wold Open Day
- Heritage Open Days
- Tetford Scarecrow Festival
- East Midlands Regional Assembly Expo



## Making the Most of the Lincolnshire Wolds

Our 'Making the Most of the Lincolnshire Wolds' publication was updated in March 2005 and provides an easy to use visitor guide to the facilities and services that can be found in and around the Wolds AONB. This includes a current listing on the availability of public houses, post offices, shops, tea rooms and other attractions for over sixty villages in the Wolds. The leaflet provides information on the market towns that surround the AONB including markets and main points of interest.





## Raising Awareness and Understanding

### New publications

This year saw the launch of our first general information leaflet on the AONB - **Enjoy the Lincolnshire Wolds**. This strategic leaflet is the first of its kind for the Lincolnshire Wolds and seeks to raise awareness of the many special features of this living and working landscape. It reinforces the message of a unique landscape: formed by nature, managed by people and enjoyed by everyone. The leaflet also reinforces our links to wider partnership initiatives through publicising the Tastes of Lincolnshire and Visit Lincolnshire campaigns and highlighting accessibility to the Wolds by public transport.

We also rolled out our 'Wonders of the Wolds' leaflet series to highlight outstanding qualities of the AONB. The first leaflet - **Geology of the Lincolnshire Wolds**, produced in consultation with the Lincolnshire RIGS (Regionally Important Geological and Geomorphological Sites) Group, highlights the importance of the geology and glaciated landforms within the AONB.

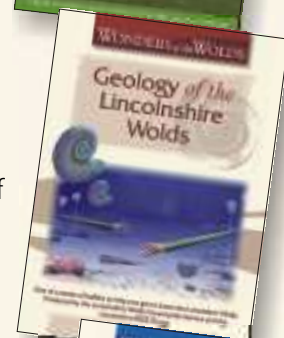
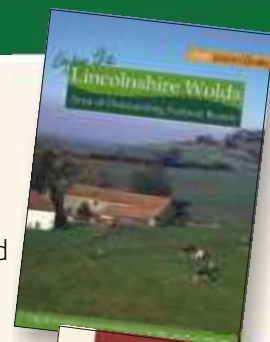
The second 'Wonders of the Wolds' leaflet - **Water of the Lincolnshire Wolds**, was produced with the support of the Lincolnshire Chalk Streams Project and publicises the importance of the fresh water springs, streams and rivers in and around the AONB. The leaflet describes many important water features including Claxby Springs, Stockwith Mill and the nearby Blow Wells at Tetney and Barrow. Threats and issues to the important water resource are described and awareness is raised through the WaterWise tips to reduce water use.

The new **LWCS website** was launched in March 2005 providing an information and contact point similar in design and format to other AONB websites. The site provides everything you need to know about the Wolds including management and project news, information about events, places to visit and where to go for further advice and support. All information is easy to find and our publications can be downloaded or ordered online.

### Planning

Formal comments were submitted on a range of strategic planning documents including the Lincolnshire Structure Plan; Lincolnshire Waste Plan; East Lindsey Local Plan; West Lindsey Local Plan; Lincolnshire Transport Plan; East Lindsey Transport Plan; Space for Trees (East Midlands); Trees and Our Changing Region (Yorkshire).

Throughout the year the LWCS commented on a number of planning applications including those relating to equestrian facilities, farm diversification schemes, residential developments, telecommunications, mineral applications and neighbouring wind farm applications.



## Projects



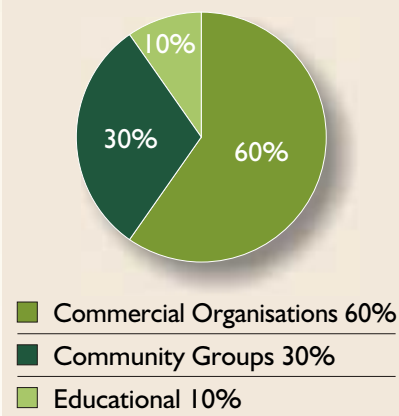
### Sustainable Development Fund

The Lincolnshire Wolds launched the first Sustainable Development Fund (SDF) in an English AONB in April 2004 following a successful bid to the East Midlands Development Agency (emda), our Regional Development Agency. A £105,072 grant offer was provided to set up the pilot SDF for 2004/05 and made available £75,000 for use as a delegated grant fund for projects that could satisfy joint emda and AONB targets.

Crucially the funding support enabled the establishment of a part-time Project Officer post to organise, administer and publicise the fund. An important milestone was the creation of an independent grant assessment panel, made up of representatives from a range of agencies, which helped steer the development of the SDF and evaluate applications received for over £1,000.

By the end of the pilot more than one hundred and fifty expressions of interest had been received. These ranged across numerous sectors and types of project. A total of twenty-two applications were formally submitted during the pilot. The pilot has successfully grant aided ten projects, with six grants awarded to commercial organisations, three to community groups and one to an educational centre. In total £74,736 of funds were allocated, drawing down in excess of £95,000 of match funding. The pilot has supported a diverse range of projects in the AONB many of which may not have gone ahead without SDF support and guidance. Projects have included:

- Start-up costs for a business promoting renewable energy from timber waste
- Composting equipment to help a business deal with its green waste more efficiently
- Community composting toilets in a rural location
- ICT for a travel business supporting communities in the Wolds
- Refurbishment of a redundant school building for holiday accommodation
- Farm diversification projects supporting countryside jobs
- An educational project producing a study pack based on a river catchment in the Wolds
- Enhancement of a community recreational area



Following a positive internal evaluation of the SDF pilot by emda we have subsequently secured £100,000 of funding through Lincolnshire Enterprise to continue the fund during 2005/06. Our success in running the pilot has received good publicity locally, regionally and nationally and has helped to demonstrate the contributions that AONB units can make to aiding rural recovery. DEFRA announced in May 2005 that they will be providing £3.5 million to aid the much needed roll-out of an SDF scheme to all of England's 36 AONBs, joining similar schemes pioneered by the Welsh AONBs, National Parks and our initiative in the Wolds.

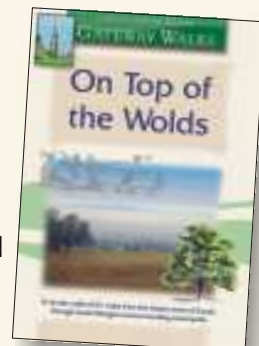
The SDF was crucially launched a short time after the production of the Management Plan and has enabled us to support communities and businesses in putting words into actions. The fund has importantly increased our standing amongst the local communities throughout the Wolds through providing opportunities for innovation.

## Projects



### Louth Gateway Walks

Following on from the overwhelming popularity of the Market Rasen Gateway Walks, the LWCS has worked alongside the Louth Market Town partnership to produce a similar set of Gateway Walks from Louth. Four new circular walks have been produced varying in length from 5½ to 8½ miles in length. This also provided the opportunity to revise the leaflet for the popular Round Louth Walk, a 14 mile walk that can be accessed at various points from the town. The Gateway Walks are a continuing theme established in the Lincolnshire Wolds Interpretation Strategy which recognises the importance of promoting the market towns as principal access and information points for the AONB.



The Belchford, Fulletby, Nettleton and South Thoresby Wolds Walks and the Market Rasen Gateway Walks leaflets were all reviewed and reprinted making available a total of 15 walk leaflets for 2005.

### Landscape Grant Scheme

The Landscape Grant Scheme continued providing 50 - 75% grant assistance, up to a maximum of £1000, for landowners and community projects that aim to protect and enhance the AONB landscape and its special features.

A modest £5,899 grant assistance supported a total of thirteen schemes across the Wolds and included a variety of hedge, tree and pond restoration projects. Grant support included the restoration of the conservation area at Riby, with much of the work undertaken by parishioners and local farmers.

### Breakdown of Landscape Grant Scheme

Project type	Number of sites	Length/area
Hedge planting	10	2,300 km
Hedge restoration	2	238 m
Ponds & conservation areas	2	
Re-seeding & fencing	1	
Tree planting	3	100 trees



We aim to continue this scheme during 2005/06 with an added emphasis on targeting the restoration of beech clumps, a distinctive landscape feature in the Chalk Wolds character area.

The LWCS has continued to liaise closely with many landowners in the Wolds, providing a wide range of advice and information on the Lincolnshire Wolds AONB and other grant support schemes, like the Countryside Stewardship Scheme. Strategically the LWCS has been involved in the consultation on the new emerging Environmental Stewardship Schemes to ensure emerging targets and guidance notes are representative of the AONB Management Plan and the wider Lincolnshire Wolds Character Area.

## Projects



### Chalk Streams Partnership

There are over 150 chalk rivers in England and public attention has often focussed on the large rivers in southern England, such as the Avon, Test and Itchen. However, it is not well known that the Lincolnshire Wolds has a number of chalk streams and springs of special interest which support at least seven species of national conservation importance.

The Lincolnshire Wolds Chalk Streams Project brings together a partnership of organisations that are actively working together to conserve and enhance this nationally important resource. The Environment Agency, LWCS, English Nature, Lincolnshire Wildlife Trust, Anglian Water and the Wild Trout Trust are taking action to ensure that the nature conservation, landscape, community and economic interests are taken into account when working on chalk streams.

The main objectives for Lincolnshire Chalk Streams are:-



- Improved resource definition
- Securing environmental improvements
- Awareness raising

Work completed so far includes surveys of more than fifty chalk springs and streams, a restoration project on the Waithe Beck and the new **Water of the Lincolnshire Wolds** leaflet, produced to help local people and visitors gain an insight into this precious resource.

### Traditional Roadsigns in Lincolnshire

The LWCS have been involved with the Traditional Roadsigns in Lincolnshire (TRiL) project to initiate a programme of restoration on the numerous old roadsigns that are scattered along the network of lanes in the Wolds.

The TRiL group, a partnership between LWCS, Lincolnshire County Council's (LCC) Highways department, Heritage Trust of Lincolnshire and local historians had catalogued all of the old signs found throughout the county. The Wolds was found to contain a high density of locally distinctive signs most of which are more than 60 years old. These typically comprise concrete post, usually painted black and white, supporting wooden directional arms with raised cast iron lettering. Sadly many were in a poor state of repair, with damaged posts and missing arms.

TRiL with the support of LCC's Highways Department has undertaken an ambitious programme of mainly restoration across the Wolds. As a result, between June 2004 and March 2005, 100 signs were refurbished. Special care was taken to ensure the often unique wording of many of these signs was not lost. This extremely successful project has had an immediate impact in raising the quality of the local environment and has helped to reinforce the special identity of the AONB. Most importantly the project has been very well received by residents and visitors:

*"I am writing to congratulate you and the project for a great success in helping to transform the appearance on the roads across the Lincolnshire Wolds" Resident of Skendleby near Spilsby.*

*"I write on behalf of the people of Fulletby village thanking you for our recently refurbished finger post. It is magnificent and has already raised many good comments. Please accept our sincere thanks for a job well done" Fulletby Parish Council.*





## Projects

### Local Interpretation

#### Brinkhill Heritage Panel

The LWCS have worked closely with the Brinkhill History Group to produce a village interpretation panel to explain and illustrate some of the history in and around Brinkhill. This village is typical of many of the close-knit communities in the AONB comprising less than fifty dwellings. The panel has been positioned at the start of a public footpath that leads close to one of the largest moats and gives an insight into much of the local history, including its connections with the Romans, Oliver Cromwell and Brinkhill Gold. Most rewarding has been the renewed interest in the village history from the residents of Brinkhill themselves - a project we hope to repeat in other communities within the Wolds.



#### Project Focus - Welton le Wold

Site history - The small valley at Welton le Wold is unusual as it contains a complete sequence of three distinctly different Ice Age deposits. Welton gravel, brought here via glaciers, was once worked as a private quarry and used in the construction of local airfields and cold war bunkers, until extraction stopped in the early 1970's when it became economically unviable. In the late 1960's flint hand axes and the remains of elephant, horse, deer and bison dating to the Palaeolithic period (pre-10,000 BC) were discovered in gravels in an exposed section of the quarry face.

The LWCS became involved with the landowner through advice and assistance in a Countryside Stewardship Scheme, which includes hedgerow restoration, meadow creation and management, pond creation and educational access.

Through close collaboration with the landowner, the Lincolnshire RIGS Group, Lincolnshire Wildlife Trust, Heritage Trust of Lincolnshire, English Nature, English Heritage and LWCS a variety of funding has enabled access and interpretation work to be undertaken. Sections of the quarry face were sensitively cleared exposing fresh gravels for further scientific study.

The results so far have exceeded all our expectations, with the stratified remains being the oldest in the region and the glacial deposits now recognised as one of the first sites in Britain where evidence of a previously unknown ice sheet are recorded. Further developments are planned to continue with research and it is hoped that Open Days, such as those held in 2003 and 2004, will continue to be a success and help inform locals and visitors of a truly unique site within the Lincolnshire Wolds.



## Projects



### Village Focus - Tealby

#### Multi-Use Centre

The LWCS attended the official opening of Tealby's new Multi-Use Centre. This important village facility includes the Post Office, general store and part-time doctor's surgery. This shows the long-term commitment of the community in not only fundraising but also staffing the premises on a voluntary basis.



#### Tealby Design Guide

LWCS attended the launch of the Tealby Village Design Statement. This document was produced under the auspices of the Tealby Society and highlights the history, built heritage and special architectural details of many of the buildings in the village. The document has been prepared for use as Supplementary Planning Guidance by West Lindsey District Council and will assist future planning applications.



#### Churchyard Wall Restoration

Following on from our initial involvement with wall restoration in Tealby, we assisted the village in securing funding through the Local Heritage Initiative for the second phase of restoration of the churchyard wall and steps. Tied in with the completed restoration, work has started on producing a book about the wider heritage of the area along with an information board and leaflet which will be completed in 2005.



#### School Conservation Area

The LWCS and BTCV (West Lindsey) helped the children and teachers of Tealby School restore and enhance their conservation area, making it more accessible for all ages to enjoy. We cleared the area of overgrown shrubs, removed excess vegetation from the pond, cut back hedges, removed the old fence and planted a new hedge, trees and bulbs.



#### Bowling and Lawn Tennis Club

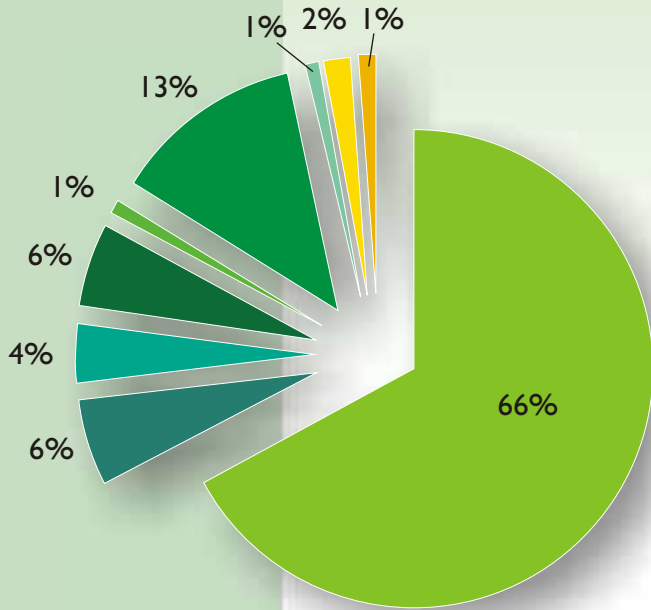
Tealby and District Bowling and Lawn Tennis Club has recently opened its new clubhouse and improved playing facilities, which is now able to accommodate new membership from a wide reaching area. The SDF contributed in completing the project with a new sign that had been sustainably sourced and designed to fit with village design priorities. A launch event was attended by the LWCS which gathered together the many individuals and organisations that had supported the project.



# Financial Summary 2004 - 05

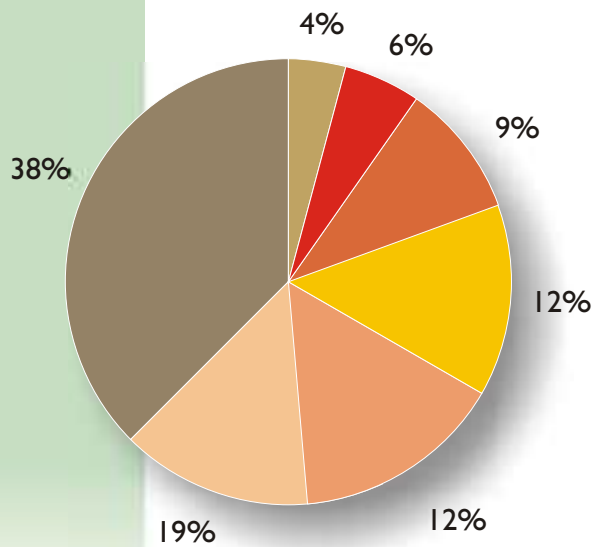
## Lincolnshire Wolds Countryside Service

Core expenditure £163,237



- Staff costs - 66%
- Printing / Graphics - 13%
- Premises - 6%
- Equipment / Materials - 6%
- Vehicles - 4%
- Consultancy - 2%
- Subscriptions / Conferences - 1%
- Advertising / Promotions - 1%
- Miscellaneous - 1%

Project expenditure £42,689

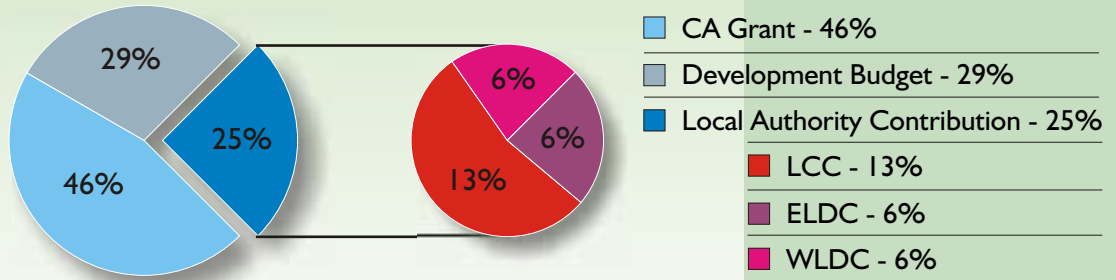


- AONB Surveys - 38%
- Walks Leaflets - 19%
- Landscape Grants - 12%
- TRiL - 12%
- Louth Gateway Walks - 9%
- Chalk Stream Leaflet - 6%
- Brinkhill Panel - 4%

# Financial Summary 2004 - 05



Income £284,943

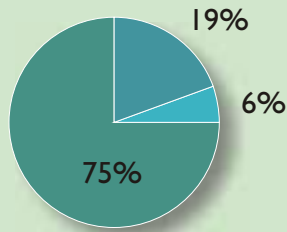


## Lincolnshire Wolds Sustainable Development Fund

Total Income £105,072 (emda grant)

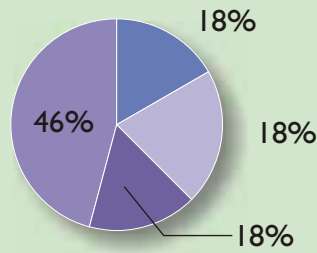
Total Expenditure £98,896

### Expenditure



- Grant - 75%
- Staff Costs - 19%
- Administration - 6%

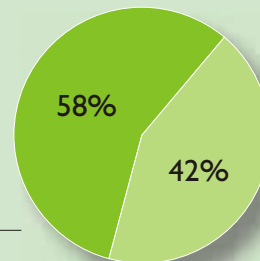
### Total Grant Expenditure £74,734



- Less than £2,000 - 18%
- £2,000 - £4,000 - 18%
- £6,000 - £8,000 - 18%
- £8,000 - £10,000 - 46%

Total Grant Offered £74,734 -  
Total Project Match Funding £104,423

- Grant Offered 42%
- Match Funding 58%





## Governance and Staffing Structure

### Lincolnshire Wolds Joint Advisory Committee

Membership as at March 2005.

*Bold type denotes representatives on the Joint Management Group (JMG)*

Catherine Aitchison

Roger Ashford

Penny Baker

Cllr Alan Caine

**Steve Catney**

Brett Collier MBE

Dr Glyn Coppack

Charles Dobson (JAC Vice Chairman)

Roger Douglas

Kate Fearn

**Chris Gordon**

Nicola Hadley

John Hendrie

**David Herd**

**Rob Lawton**

**Mike Leary**

Barbara Locke

Terry Miller

Cllr S Newton

**David Pocklington**

**Cllr V Ranyard**

Neil Riddle

Richard Roberts

David Rodger

David Rossington

**Cllr Mrs S E Roy**

**Cllr S Rudkin**

Andrew Shirley

Ella Sivil

Henry Smith

David Start

Caroline Steel

Sally Stowell

Caroline Tero

**Cllr B Theobald (JAC Chairman)**

**Cllr A H Turner, MBE**

Roger Wardle

**Jon Watson**

Graham Weaver

Fiona White

Jayne Young

Lincolnshire Development

Environment Agency

Lincolnshire Tourism

West Lindsey District Council

**Lincolnshire County Council**

Ramblers' Association

English Heritage

National Farmers Union

Country Land and Business Association

English Heritage

**Countryside Agency**

Groundwork Lincolnshire

Forestry Commission

**Countryside Agency**

**West Lindsey District Council**

**North East Lincolnshire Council**

Community Council of Lincolnshire

Churches Together in all Lincolnshire

East Lindsey District Council

**East Lindsey District Council**

**East Lindsey District Council**

Forestry Commission

Lincolnshire County Council

British Trust for Conservation Volunteers

Lincolnshire Economic Action Partnership

**Lincolnshire County Council**

**North East Lincolnshire Council**

Country Land and Business Association

Campaign to Protect Rural England

National Farmers Union

Heritage Trust of Lincolnshire

Lincolnshire Wildlife Trust

Sport England

Environmental Agency

**West Lindsey District Council**

**Lincolnshire County Council**

Farming and Wildlife Advisory Group

**Lincolnshire County Council**

English Nature

Community Council of Lincolnshire

Lincolnshire Tourism

#### Guest organisations of the JAC include:

DEFRA

Lincolnshire Enterprise

East Midlands Development Agency

Government Office East Midlands

# Memorandum of Agreement



There is a signed Memorandum of Agreement between Lincolnshire County Council, East Lindsey District Council, West Lindsey District Council and the Countryside Agency endorsing commitment as a funding partner to manage the Lincolnshire Wolds Area of Outstanding Natural Beauty (AONB), through supporting the Lincolnshire Wolds staff unit.

The agreement commits all organisations to a 3 year rolling programme of funding, subject to a satisfactory review by the Officers Working Group and endorsement by the Joint Advisory Committee for the Wolds.

*The Countryside Agency have itemised the following as areas of core activity for the Lincolnshire Wolds Countryside Service.*

- Core Activity 1** Developing, reviewing, preparing and publishing the AONB vision and the CRoW Act AONB Management Plan
- Core Activity 2** Promoting the AONB vision and Management Plan to help distinguish the AONB from adjacent countryside
- Core Activity 3** Advising upon, facilitating and co-ordinating implementation by others of the Management Plan
- Core Activity 4** Advising Local Authorities on their activities within AONBs, to encourage them to go beyond normal levels of service (attain the highest possible standards) in countryside management
- Core Activity 5** Monitoring and reporting on progress against AONB Management Plan targets
- Core Activity 6** Monitoring AONB landscape condition
- Core Activity 7** Accessing resources for management activities
- Core Activity 8** Working with and contributing to the NAAONB activities, sharing advice and best practice nationally and regionally
- Core Activity 9** Providing a management role to co-ordinate AONB protection through the actions of the AONB unit, the AONB partnership and other partners at a local and strategic level
- Core Activity 10** Developing an involvement by the community in the management of the AONB
- Core Activity 11** Providing landscape related planning advice

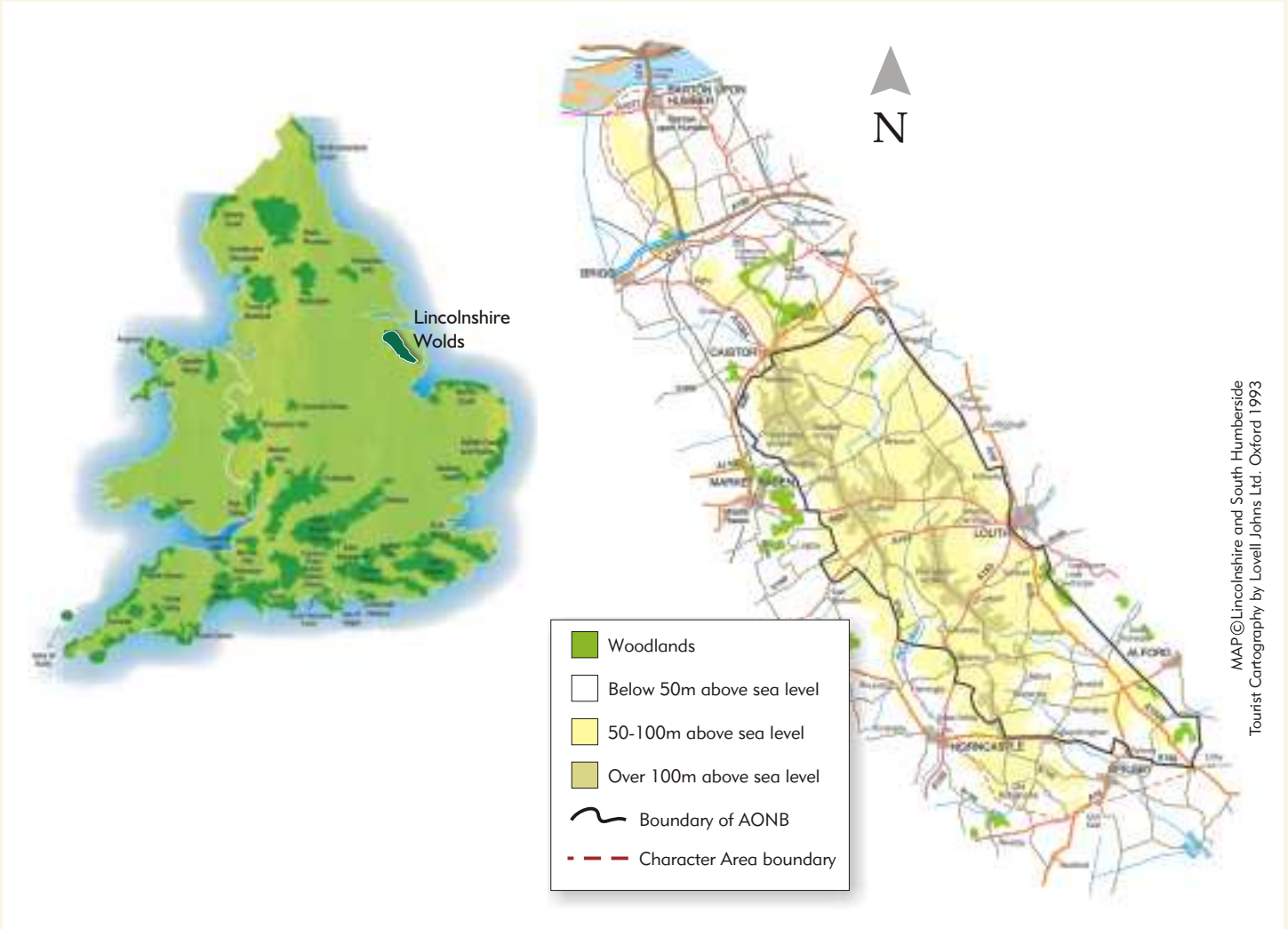
## **Lincolnshire Wolds Countryside Service (AONB Unit):**

Stephen Jack	Lincolnshire Wolds Countryside Service Manager
Helen Gamble	Project Officer
Louise Niekirk	Project Officer
Judy Bell	Project Officer (Sustainable Development Fund)
Jenny Evans	Administration and Technical Assistant

The Lincolnshire Wolds Countryside Service is hosted by Lincolnshire County Council and works in partnership with the Joint Advisory Committee and other groups and individuals to:

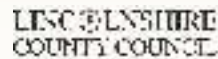
- **Protect and enhance the natural beauty of the AONB**
- **Encourage community interest and involvement in the AONB**
- **Promote sustainable development and appropriate enjoyment in the AONB**
- **Raise public and political awareness and support for the AONB**

# Lincolnshire Wolds AONB Maps



## Lincolnshire Wolds Countryside Service

Navigation Warehouse, Riverhead Road, Louth, Lincolnshire LN11 0DA  
 Tel: 01507 609740 Website: [www.lincswolds.org.uk](http://www.lincswolds.org.uk) Email: [aonb@lincswolds.org.uk](mailto:aonb@lincswolds.org.uk)



If you would like this document in an alternative format, please contact us.  
 It is also available on our website [www.lincswolds.org.uk](http://www.lincswolds.org.uk)

Printed on chlorine free paper produced from sustainable source