



Inspiring woodland creation:

The benefit of trees for the farm business

Phillip Ayres – Land use advisor East and East Midlands

Agenda:

- Why plant trees?
- What funding is available?
- Carbon credits
- Other revenue streams
- Q&A



It's a complex landscape



- ❖ Environmental Land Management (ELMs)
- ❖ Grants and schemes
- ❖ New partners
- ❖ Biodiversity Net Gain (BNG)
- ❖ Net zero

Why more trees?



Benefits of trees and Government pledge

- As trees grow they take carbon dioxide out of the air which helps to tackle climate change
- They create places for insects and animals to live which helps biodiversity
- The Government has passed a law that requires the UK to bring all greenhouse gas emissions to net zero by 2050
- Government has pledged to deliver 30,000 hectares of woodland per annum by 24/25 in the UK and has grants to incentivise this

Climate emergency

Climate crisis

– Causing extreme weather conditions

Biodiversity crisis – Loss of species and vital wildlife corridors



Photo credit: Getty images

The benefits of woodland creation

Restored landscape

Soil stabilisation

Carbon capture

Reduced pollution

Improved air quality

Increased biodiversity

Health and well-being

Timber and woodfuel

Reduced soil and nutrient loss

Food source for pollinators

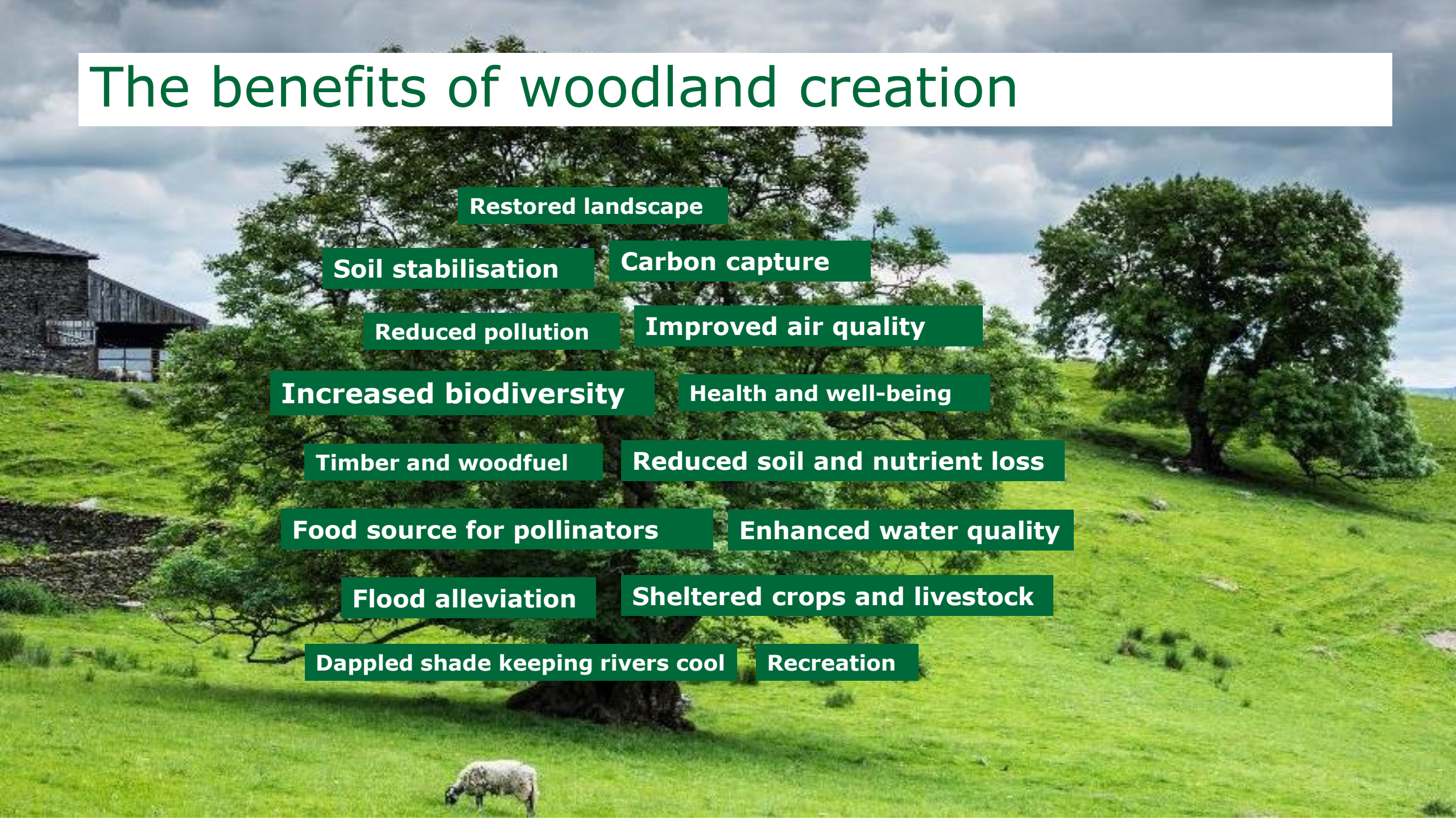
Enhanced water quality

Flood alleviation

Sheltered crops and livestock

Dappled shade keeping rivers cool

Recreation



The benefit of trees for the farm business

- Protect against erosion
- Reduce flooding
- Improve water quality
- Cut farm pollution
- Provide shade and shelter
- Reduce the risk of diseases
- Help with stress reduction
- Animal health and welfare



Woodland Income Streams



Timber & Woodfuel

Well-managed woodlands can provide viable income through timber and woodfuel.



Carbon offsets

For every tonne of carbon dioxide (CO₂) sequestered, you could sell carbon units (if registered with WCC).



Recreation

Woodlands offer new recreation opportunities for your land, from game shoots to glamping to forest schools.

Woodland provides new opportunities for your land and to diversify your business.

Financial incentives – What funding is available?



For more information on available funding, visit:

www.gov.uk/guidance/tree-planting-andwoodland-creation-overview

Woodland Creation Planning Grant

Enables applicants to access the suitability of land for woodland creation

- Available to landowners, land managers and public bodies (excluding Forestry England)
- Cover the costs of producing a UKFS compliant woodland design
- Supports applications to other funding sources, such as EWCO
- Proposed woodland needs to be a minimum of 5 ha
- Up to £30,000 per site available



Woodland Creation Planning Grant

Stage One	£1000	Desk based research to identify planting opportunities
Stage Two	£150/ha	Woodland creation and design concept plans minimum payment £500
Supplementary	Up to 70%	Additional payments for surveys e.g. grassland

England Woodland Creation Offer



Rewards farmers and landowners for establishing new woodland that offers social and environmental benefits

Covers standard costs for capital activities and items required to create woodland

Helps maintain young trees with annual payments

Supports actual costs of installing infrastructure to manage woodland or improve recreational access

Designed for
land
managers and
farmers...

Objectives:

- Wildlife
- Income
- Improve productivity
- Diversify
- Landscaping



**EWCO has the flexibility to
allow you to create woodland
that works for your objectives.**

England Woodland Creation Offer

Covers capital costs for establishing new woodland, maintains young trees with annual payments, and supports costs for installing infrastructure

- Supports the creation of a range of woodland types that meet UKFS
- Applications can be from as little as 1 ha
- Capital costs of tree planting, up to £10,200/ha
- Annual maintenance payments of £350/ha for 15 years
- Additional contributions, up to £8,000/ha



The infographic is a vertical document with a green header and a photograph of a new woodland. The header contains the Forestry Commission logo and the Woodland Creation logo. The main title is 'Creating new woodland: The England Woodland Creation Offer'. Below this, it lists grant funding to: reward farmers and land managers, cover standard costs, maintain young trees, and support infrastructure costs. The photograph shows a landscape with a stream and rows of young trees. The URL 'www.gov.uk/guidance/england-woodland-creation-offer' is at the bottom.

Forestry Commission

Woodland Creation
Planting for the Future

Creating new woodland: The England Woodland Creation Offer

Grant funding to:

- Reward farmers and land managers for establishing new woodland that offers environmental and social public benefits
- Cover standard costs for the capital activities and items required to create woodland
- Maintain young trees with annual payments
- Support the actual costs of installing infrastructure to manage the woodland or improve recreational access

www.gov.uk/guidance/england-woodland-creation-offer

EWCO - payments for delivering public goods

Schemes can attract all contributions if it meets all the criteria - up to a total of £8,000 (one off payment).

Biodiversity - increased wildlife supporting ecosystem

£2,800/ha (high)
£1,100/ha (med)

Protected river corridors (riparian buffers)

£1,600/ha

Improved water quality by reducing agricultural run-off

£400/ha

Close to villages and towns

£500/ha

Flood risk management

£500/ha

Recreational access - support health and wellbeing

£2,200/ha

Additional Contributions

How they apply to an example landholding...

Each location
600m away
from the next,
but potential
support ranges
from £900 to
£5,800/ha

Water: £400/ha
Flood: £500/ha
Biodiversity: £1,100/ha

Water: £400/ha
Flood: £500/ha
Biodiversity: £2,800/ha
Close to settlements
£500/ha
Riparian buffers
£1,600/ha



Water: £400/ha
Flood: £500/ha

Eligibility

Land must be in **England**

Minimum application size **one hectare**

Minimum width 20 metres (10 metres for shelterbelts and riparian planting)

No maximum application or block sizes

Joint applications are welcome

Land must be free of existing grant schemes

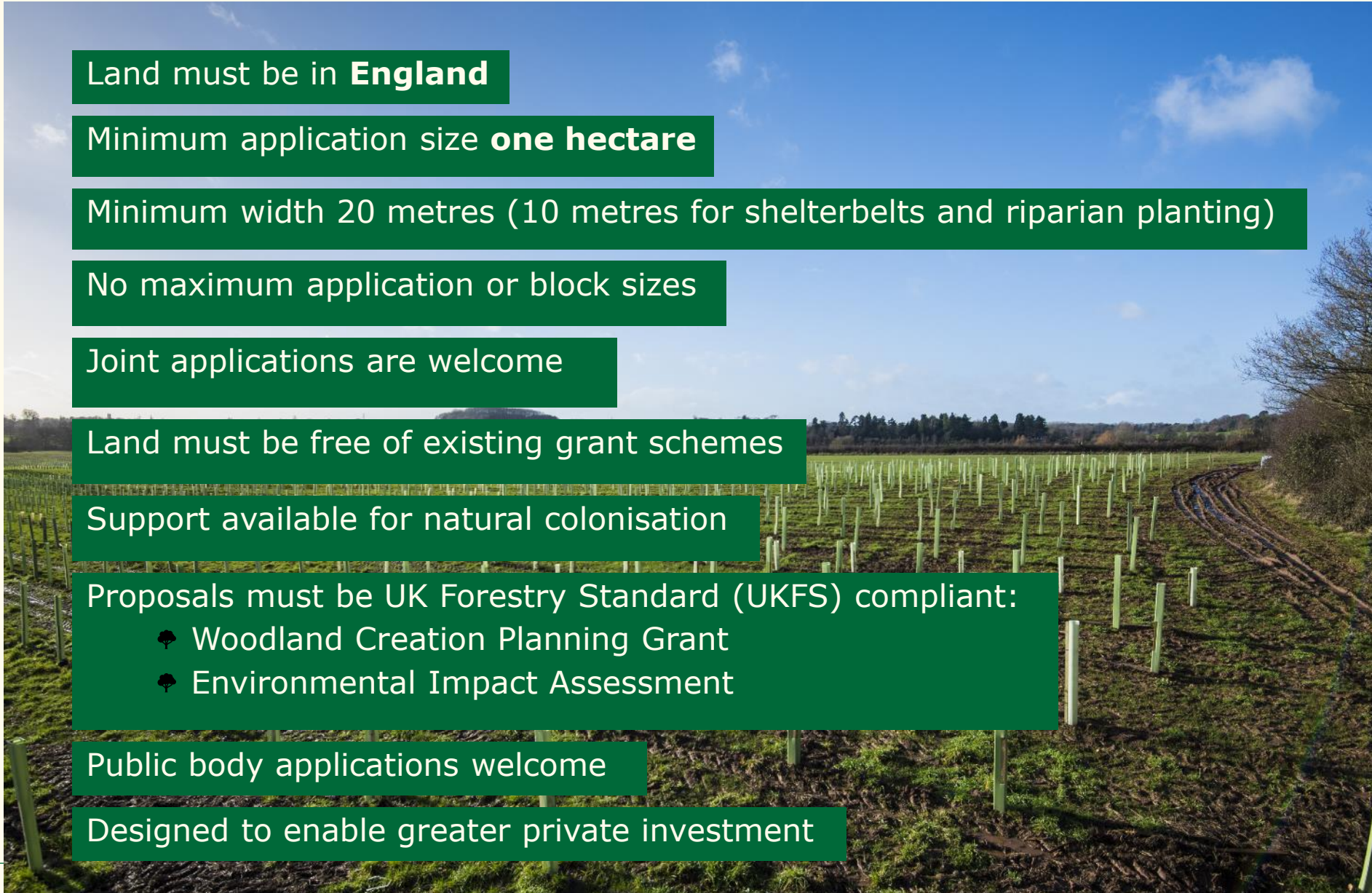
Support available for natural colonisation

Proposals must be UK Forestry Standard (UKFS) compliant:

- 🌲 Woodland Creation Planning Grant
- 🌲 Environmental Impact Assessment

Public body applications welcome

Designed to enable greater private investment



Tax relief



Trees are subject to a range of tax reliefs:

- a growing timber crop is exempt from Capital Gains Tax (but not the land it grows on), where managed as a commercial investment
- income from the sale of timber from the ownership of commercial woodlands is exempt from income and corporation tax
- under Woodlands Relief the value of woodland can be exempted from inheritance tax

Forestry England Woodland Partnership

A leasehold scheme offering commercial rent to landowners

- Forestry England are responsible for the designing, planting, and management of your woodland
- Minimum of 50 ha
- 60 or 120 years leasehold



Partner grants



England's Community Forests Tree for Climate Fund:

Expert support and up to 100% flexible and bespoke grant funding for up to 15 years. Open to all landowners within any community forest area.

englandscommunityforests.org.uk/landowners



The National Forest:

Generous grants and support for tree planting, forest creation and habitat management in the Midlands, available to landowners within the 200 square miles of the National Forest. Grant schemes offer funding to cover design, planning and up to 100% of implementation costs.

nationalforest.org/about/partner-with-us/grant-opportunities

Partner grants



Northern Forest:

A partnership between the Woodland Trust, Mersey Forest, Manchester City of Trees, White Rose Forest and Humber Forest. You can secure up to 100% of the capital costs of woodland creation and a generous maintenance budget.

thenorthernforest.org.uk/financial-support



Woodland Trust:

Offers three national grants: MOREwoods and MOREhedges covering up to 75% of planting costs for a range of woodland creation, starting from 1.25 acres or 100 meters of new hedging, and Trees for You Farm, funding 100% of costs for bespoke agroforestry schemes.

woodlandtrust.org.uk/plant

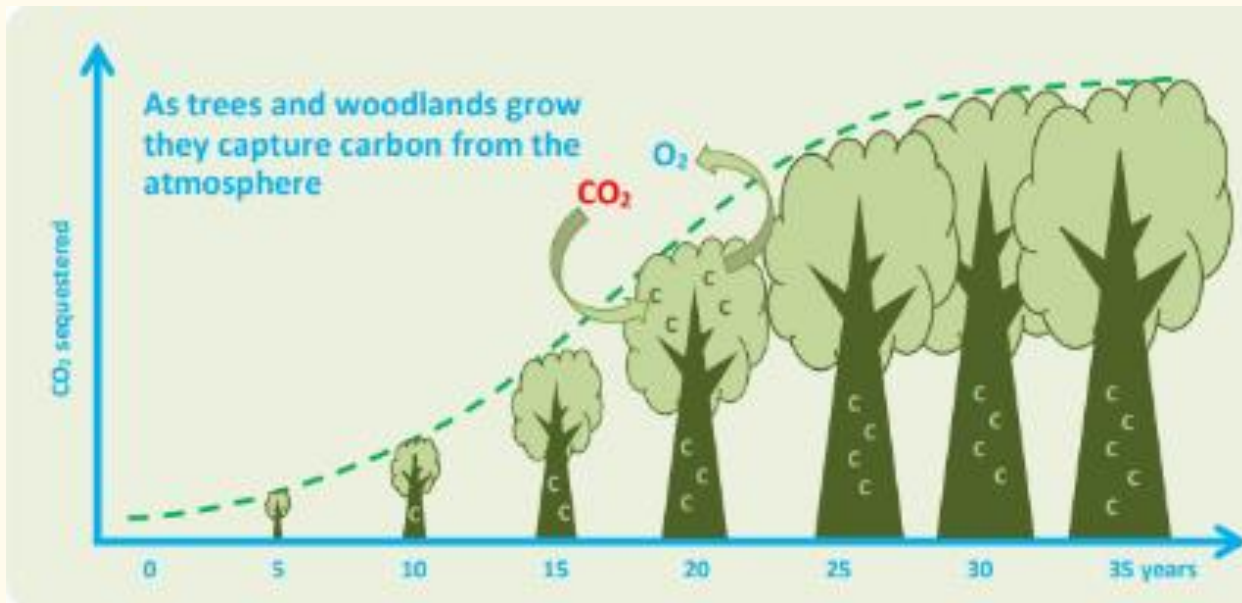


Forestry Commission

**Carbon capture and additional income
from woodlands**

Carbon capture

- Trees absorb CO₂ and store it
- One tonne of CO₂ absorbed is a 'carbon credit'
- Carbon credits can be used internally to offset, or sold on to others



The Woodland Carbon Code

Quality assurance standard for UK woodland creation projects
– generate independently verified carbon units

- Sell to those wanting to offset CO₂
- Predictable carbon capture
- Transparent and auditable
- Internationally recognised accreditation

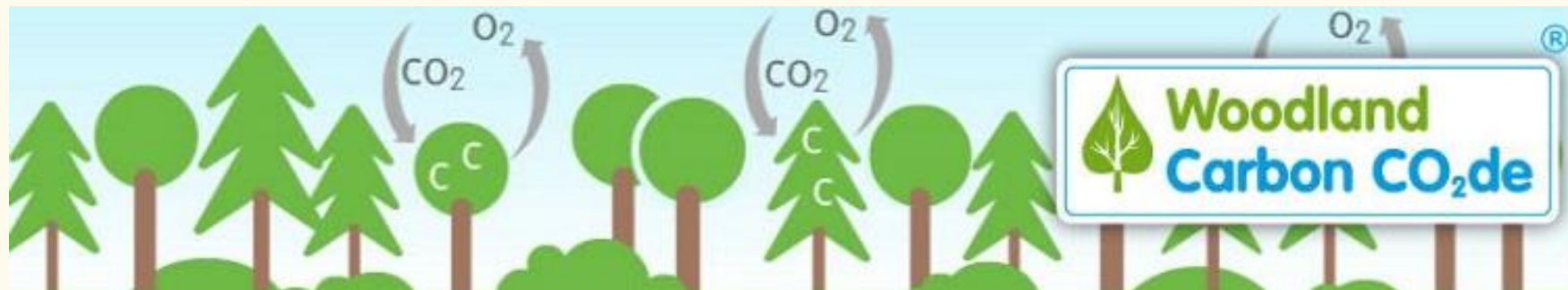


Commission

The Woodland Carbon Guarantee

Schemes must be registered with the Woodland Carbon Code
Can then apply for the Woodland Carbon Guarantee

- Annual Auction with offer to sell carbon to Government
- Guaranteed index-linked price until 2055
- Provides long term income
- Can opt out and sell privately if you get a better price
- Price set at a level to make the planting worthwhile



Carbon income

By registering woodland creation schemes with the [Woodland Carbon Code \(WCC\)](#), you can apply for the [Woodland Carbon Guarantee \(WCaG\)](#) and sell carbon units to the government or on the private market from as early as five years after planting

With carbon prices ranging from £10 to £30+ per unit, projects can see a generous return

Typically, woodland can produce in the region of 100 units/ha to over 500 units/ha over 100 years – generating anywhere from between £1,000/ha to £15,000+/ha through the sale of carbon units.



Additional income:

- Timber production
- Woodfuel
- Wood for construction & furniture
- Coppice for wood chippings & temporary fencing



Additional income:

Recreation

- Game shoots
- Glamping
- Forest schools
- Mountain biking
- Thrill-seeking adventure courses such as "Go Ape"



Summary : Trees boost biodiversity and support the climate

- Trees combat the twin challenges of biodiversity loss and climate change
- Vital role in delivering net zero greenhouse gas emissions by 2050
- Trees and woodlands bring benefits that directly boost biodiversity and support the climate
- Farmers and landowners could also receive additional Forestry Commission grant contributions up to £8,000/ha for aiding nature recovery.

Summary - How EWCO stacks up

Private finance

Timber, carbon, private finance for ecosystem services

Additional contributions

Up to £8,000/ha when contributing to additional benefits

Actual cost support for activities

Contribution towards the actual cost of infrastructure

Annual maintenance payments

£350/ha per year

Basic Payment Scheme compatibility

Continue to claim BPS on eligible land planted under EWCO

Capital costs

Up to £10,200/ha to support tree planting activities

Any Questions?



Contact details: Philip.ayres@forestrycommission.gov.uk