

J G Fisher Ltd

FiPL – **Paid 100%**

Flexxi-Finger - Flexxi Floats

J G Fisher

- Farm – 400ha
 - Split between Stallingborough and Gunnerby farms
 - Stallingborough = Marsh land
 - Gunnerby = Wold land
-
- Employ: Gareth full time and harvest casuals
 - Myself and Richard

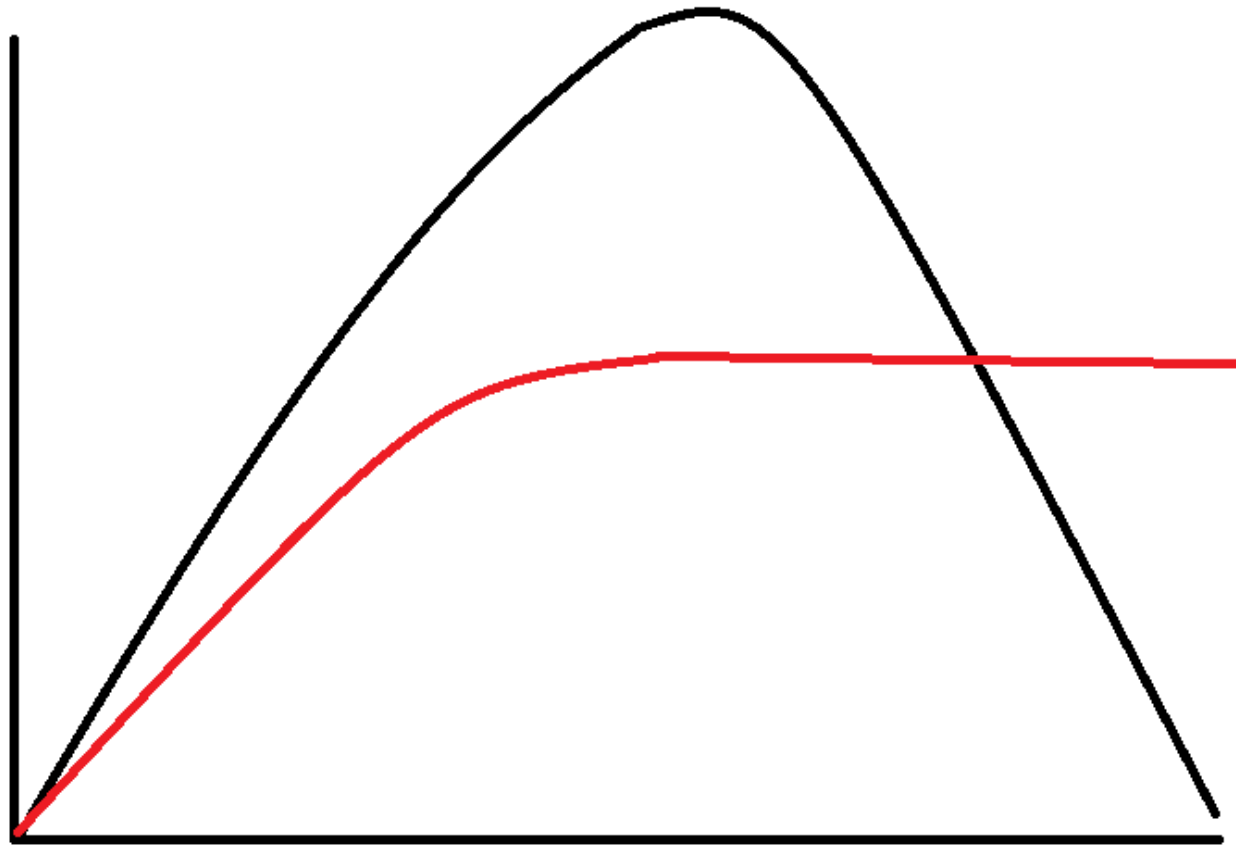
Knife Blockers



Bi-Cropping



Exudates produced Annuals vs Perennials



Bi Cropping – Adding Diversity



Sample



Why?

- Because we like a headache at harvest!

- Diversity
- Soil Health, Infiltration rate, Ground cover, Living root
- Perennial crop can be retained – Instead of late sown Cover crops?!
- Enables Grazing before winter – Reduced risk of poaching
- Two harvest dates – or leave as cover crop
 - Crops at different growth stages is good for soil biology
- Can attract a premium – E.G. WildFarmed – 6T/ha @£350+/Tonne
- Gabe Brown: You can't take bushels to the bank!!!
- We've got to remember – we are farming the long game not from yr to yr

Any Questions?